



**Wexford-Missaukee Counties
Community Assets/Needs Assessment Collaborative**

2003 Community Care Profile

CHILDREN and FAMILIES

***A Portrait of well-being for Wexford and
Missaukee Counties***

TABLE OF CONTENTS

CHILDREN AND FAMILIES

TABLE OF CONTENTS.....	1
Children - Summary Demographics	2
Table 1: Age and Sex - Summary Statistics for Children - 1990 and 2000	2
Family Households	2
Chart 1: Married Couple Households Trend, 1990-2007.....	2
Chart 2: Divorce Rate Trend: 1989-2000	3
Table 2: Divorce Rates 1989-2000	3
Table 3: Number of Divorces 1989-2000	3
Table 4: Family Status Trend, 1990-2007	4
Chart 3: Non-Traditional Households With Children, Trend 1990-2002	4
Non-Family Households.....	5
Table 5: Non-Relative Households.....	5
Table 6: Unmarried Partner Households.....	5
Charts 4: Missaukee and Wexford County Unmarried Partner Households.....	5
Children in Poverty	6
Table 7: Poverty Status of Related Children by Family Type and Age Group.....	6
Child Care	7
Table 8: Employment Status of Parents	7
Chart 5: Cost of Day Care	7
Table 9: Child Care Costs and State Subsidies.....	8
Chart 6: Grandparents Responsible for Care of Own Grandchildren.....	8
Table 10: Grandparents Living with Own Grandchildren under Age 18 by Responsibility for Grandchildren	9
Family Violence	9
Chart 7: Substantiated Child Abuse Reports.....	9
Chart 8: Missaukee/Wexford Domestic Violence Calls, 2000-2001.....	10
Chart 9: Bed-nights provided by OASIS Shelter, 2001-2002	10
Juvenile Delinquency.....	11
Table 11: Trends in Juvenile (ages 10-17) Arrests for Index Crimes: Property	11
Table 12: Trends in Juvenile (ages 10-17) Arrests for Index Crimes: Violent	11
Youth Risk Behavior	11
Table 13: WMU Alcohol and Other Drug Survey, 2000-2002.....	12
Table 14: WMU Alcohol and Other Drug Survey, 2000-2002- Aggregate Report on the Wexford-Missaukee ISD..	12

Children and Families

Children - Summary Demographics

Both Missaukee and Wexford Counties have a lower percentage of Children under the age of 5 years and a higher percentage of children ages 5-17 than the state of Michigan. This is as expected, and will continue with the increasing median age for this area. (See Demographic Overview – Age section of this report).

Table 1: Age and Sex - Summary Statistics for Children - 1990 and 2000

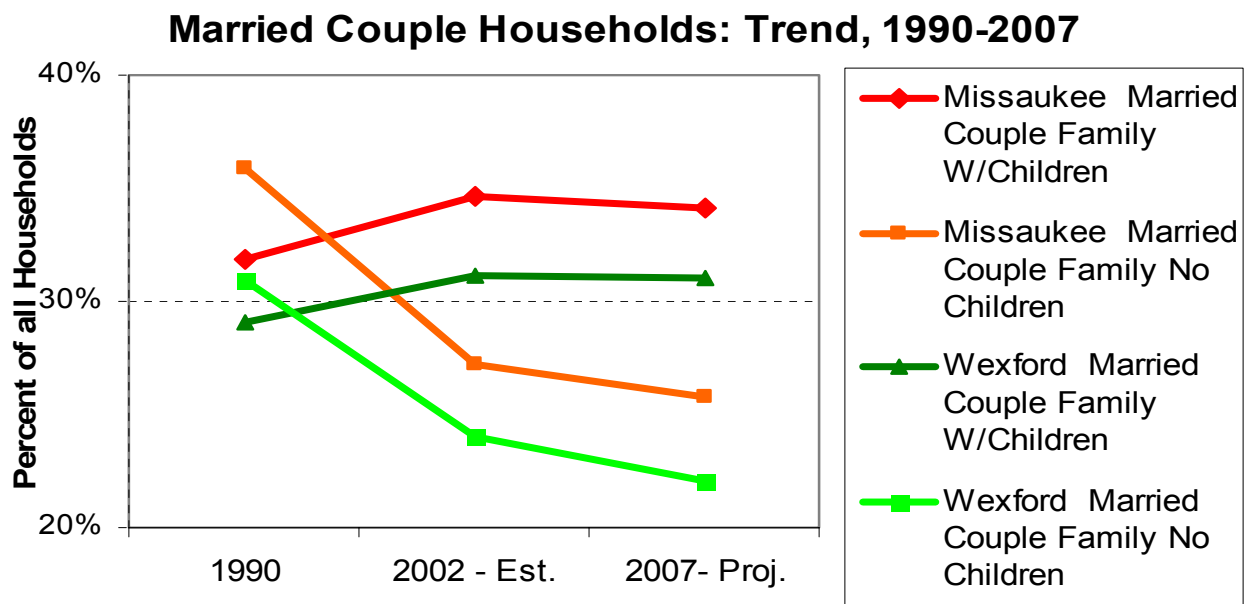
Age and Sex	Missaukee				Wexford				Michigan	
	1990		2000		1990		2000		2000	
	#	%	#	%	#	%	#	%	#	%
Pop. under age 18	3,603	100	3,921	100	7,565	100	8,173	100	2,595,767	100
Males under age 18	1,830	51	1,996	51	3,878	51	4,295	53	1,331,722	51
Females under age 18	1,773	49	1,925	49	3,687	49	3,878	47	1,264,045	49
Children under age 5	937	26	923	24	2,067	27	1,936	24	672,005	26
Children ages 5 to 17	2,666	74	2,998	77	5,498	73	6,237	76	1,923,762	74

Source: US Census 2000

Family Households

The vast majority of Missaukee (89%) and Wexford (88%) children under the age of six are living with one or more of their parents. Fewer than 2% live with non-relatives, and 9% live with non-parental relatives

Chart 1: Married Couple Households Trend, 1990-2007



From 1990-2002, both Missaukee and Wexford Counties experienced

- An increase in the percentage of married couple households with children
- A decrease in the percent of married couple households without children. This percentage will likely continue to decrease between 2002 and 2007.

Chart 2: Divorce Rate Trend: 1989-2000

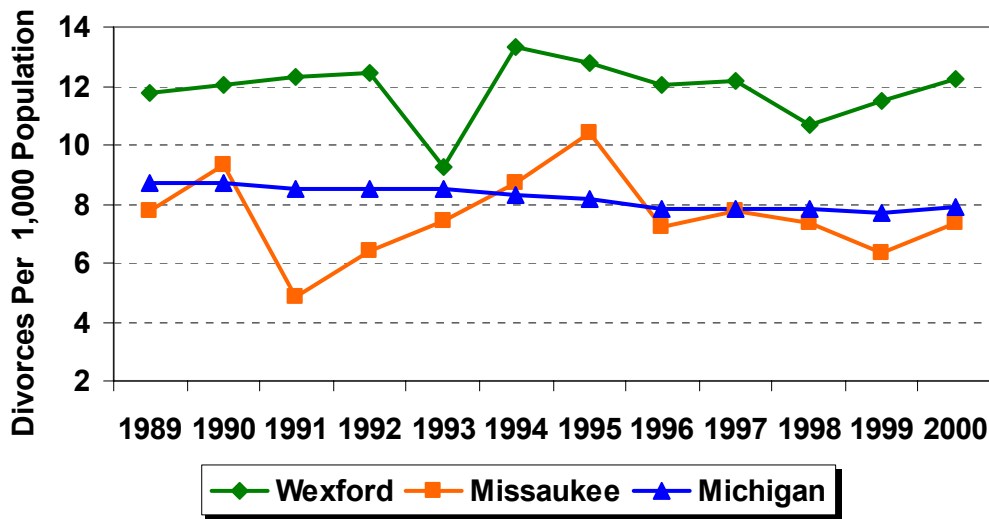


Table 2: Divorce Rates 1989-2000

Rate of Divorces (per 1,000 Population), 1989-2000												
	1989	1990	1991	1992	1993	1994	1995	1996	1997	1998	1999	2000
Missaukee	7.8	9.3	4.8	6.4	7.4	8.7	10.4	7.2	7.8	7.3	6.4	7.4
Wexford	11.7	12.0	12.3	12.4	9.3	13.3	12.8	12.0	12.2	10.6	11.5	12.2
Michigan	8.7	8.7	8.5	8.5	8.5	8.3	8.2	7.8	7.8	7.8	7.7	7.9

Source: 1989 - 1999 Michigan Occurrence Divorce Files, Division for Vital Records and Health Statistics, MDCH

Table 3: Number of Divorces 1989-2000

Number of Divorces by County of Occurrence, State of Michigan and Michigan Counties, 1989 - 2000												
	1989	1990	1991	1992	1993	1994	1995	1996	1997	1998	1999	2000
Missaukee	46	57	30	41	48	58	70	49	53	51	45	52
Wexford	154	159	164	168	128	187	182	173	177	155	170	181
Michigan	40,276	40,568	40,103	40,425	40,470	39,795	39,449	38,169	38,202	0	0	0

Source: 1989 - 1999 Michigan Occurrence Divorce Files, Division for Vital Records and Health Statistics, MDCH

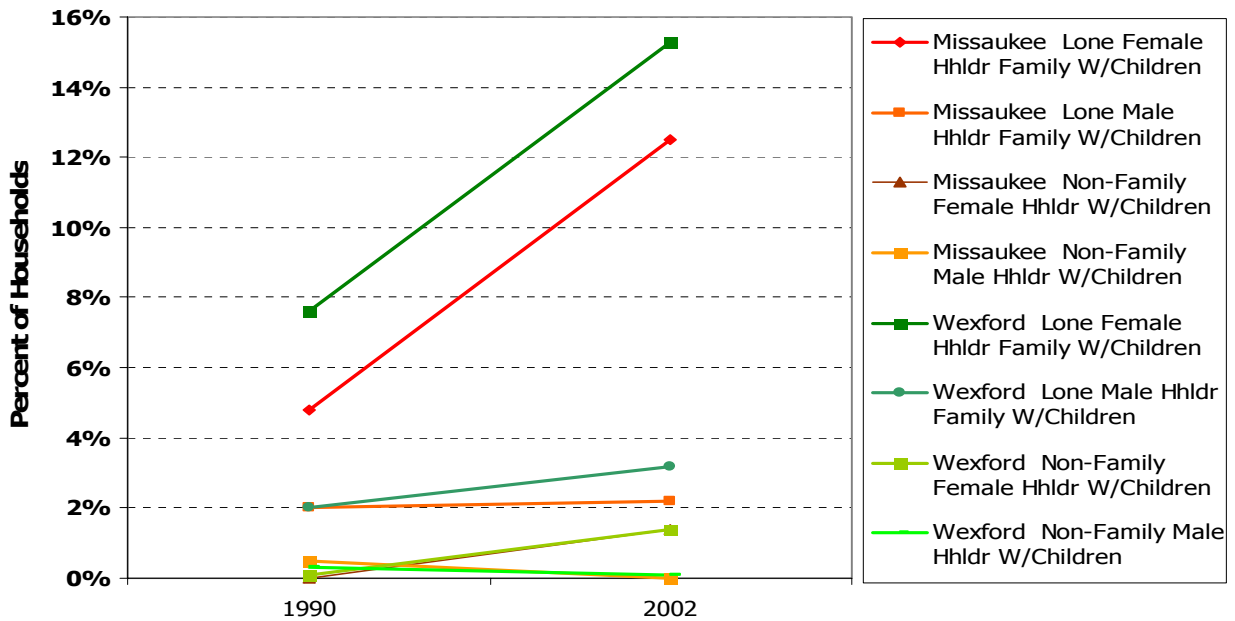
Table 4: Family Status Trend, 1990-2007

Family Status:	Missaukee 1990	Missaukee 2002	Missaukee 2007	Wexford 1990	Wexford 2002	Wexford 2007
Lone Female Householder						
- With Children	4.8%	12.5%	12.3%	7.6%	15.3%	14.8%
- Without Children	2.1%	12.9%	13.4%	2.8%	13.2%	13.8%
Lone Male Householder						
- With Children	2.0%	2.2%	2.8%	2.0%	3.2%	4.2%
- Without Children	0.7%	5.7%	5.8%	0.9%	7.7%	7.7%
Married Couple Family						
- With Children	31.9%	34.6%	34.1%	29.1%	31.1%	31.0%
- Without Children	35.9%	27.2%	25.8%	30.9%	24.0%	22.1%
Non-Family Female Householder						
- With Children	0.0%	1.4%	1.8%	0.1%	1.4%	1.8%
- Without Children	12.0%	2.9%	3.2%	15.5%	3.4%	3.9%
Non-Family Male Householder						
- With Children	0.5%	0.0%	0.0%	0.3%	0.1%	0.1%
- Without Children	10.0%	0.6%	0.8%	10.9%	0.6%	0.7%

Source: Demographics Now (SRC, LLC)

Chart 3: Non-Traditional Households With Children, Trend 1990-2002

Change in Non-Traditional Households With Children, 1990-2002



Non-Family Households

Table 5: Non-Relative Households

NON-RELATIVES BY HOUSEHOLD TYPE - US Census 2000

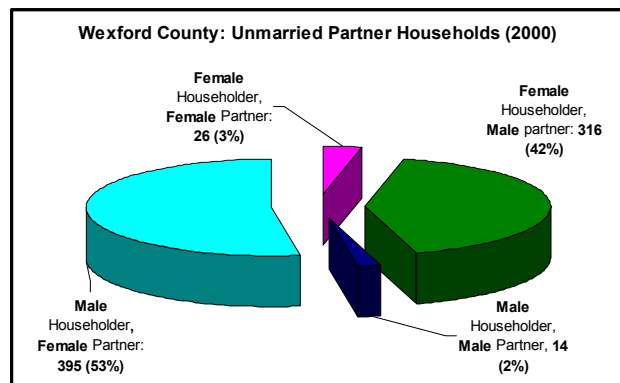
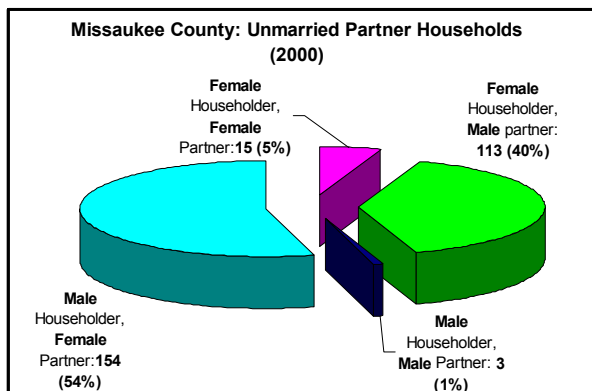
	Missaukee	Wexford	Michigan
Non-Family(relatives) Households	605	1,532	400,381
• Roomer or boarder	55	138	46,598
• Housemate or roommate	93	246	113,872
• Unmarried partner	285	751	164,569
• Foster child	29	35	9,007
• Other non-relatives	143	362	66,335
In family households:	295	800	160,238
• Roomer or boarder	41	92	20,216
• Housemate or roommate	24	91	21,132
• Unmarried partner	137	378	74,650
• Foster child	28	27	7,401
• Other non-relatives	65	212	36,839
In non-family households:	310	732	240,143
• Roomer or boarder	14	46	26,382
• Housemate or roommate	69	155	92,740
• Unmarried partner	148	373	89,919
• Foster child	1	8	1,606
• Other non-relatives	78	150	29,496
Total population (100%)	14,478	30,484	8,169,466

Table 6: Unmarried Partner Households

UNMARRIED-PARTNER HOUSEHOLDS BY SEX OF PARTNERS - US Census 2000

	Missaukee	Wexford	Michigan
Total Households	5,735	12,575	3,268,253
Unmarried-partner households:	285	751	164,569
• Male householder and male partner	3	14	6,292
• Female householder and female partner	15	26	6,803
Same Sex Couples Total	18	40	13,095
• Male householder and female partner	154	395	78,614
• Female householder and male partner	113	316	72,860
All other households	5,165	11,073	2,939,115

Charts 4: Missaukee and Wexford County Unmarried Partner Households



Children in Poverty

Table 7: Poverty Status of Related Children by Family Type and Age Group

	Missaukee		Wexford		Michigan	
Children UNDER AGE 18	3,815	100%	7,898	100%	2,531,376	100%
- in married-couple families	3,095	81%	5,835	73.9%	1,806,108	71.3%
- in single-mother families	516	13.5%	1,591	20.1%	583,654	23.1%
- in single-father families	204	5.3%	472	6.0%	141,614	5.6%
- below poverty in married-couple families	239	7.7%	323	5.5%	95,425	5.3%
- below poverty in single-mother families	210	40.7%	536	33.7%	220,130	37.7%
- below poverty in single-father families	53	26.0%	47	10.0%	24,699	17.4%
Children UNDER AGE 6						
- in married-couple families	939		1,727		576,500	
- in single-mother families	133		458		174,284	
- in single-father families	90		167		47,662	
- below poverty in married-couple families	66	7.0%	101	5.8%	33,971	5.9%
- below poverty in single-mother families	74	55.6%	214	46.7%	80,699	46.3%
- below poverty in single-father families	24	26.7%	16	9.6%	9,160	19.2%

Source: 2000 Census SF3

While the vast majority of children under age 18 are living in two parent families (81% of Missaukee and 74% of Wexford county children), children in single parent families are much more likely to be in poverty than those in two parent families:

- 8% of Missaukee and 5.5% of Wexford children in two parent families live in poverty.
- 41% of Missaukee and 34% of Wexford children in single mother households live in poverty.
- 26% of Missaukee and 10% of Wexford county children in single father homes live in poverty.
- Children under age six in single mother families have the highest risk of living in poverty (Missaukee, 56%; Wexford, 47%)

Child Care

Table 8: Employment Status of Parents

Employment Status of Parents with Children under Age 6	MISSAUKEE COUNTY		WEXFORD COUNTY	
	# Children	% Children	# Children	% Children
Children under age 6 in households	1143	100%	2375	100%
Living with two parents	890	78%	1,614	68%
Both parents in labor force	519	45%	941	40%
Father only in labor force	318	28%	595	25%
Mother only in labor force	27	2%	27	1%
Neither parent in labor force	26	2%	51	2%
Living with mother only	141	12%	508	21%
Mother in labor force	108	9%	424	18%
Mother not in labor force	33	3%	84	4%
Living with father only	106	9%	184	8%
Father in labor force	89	8%	155	7%
Father not in labor force	17	1%	29	1%
Other living arrangement	6	1%	69	3%

Source: USA Census 2000, SF3

- Less than one third of all children under age 6 in Missaukee and Wexford Counties live with a non-employed parent.
- This means that two of every three children in Wexford/Missaukee require some type of childcare.

Chart 5: Cost of Day Care

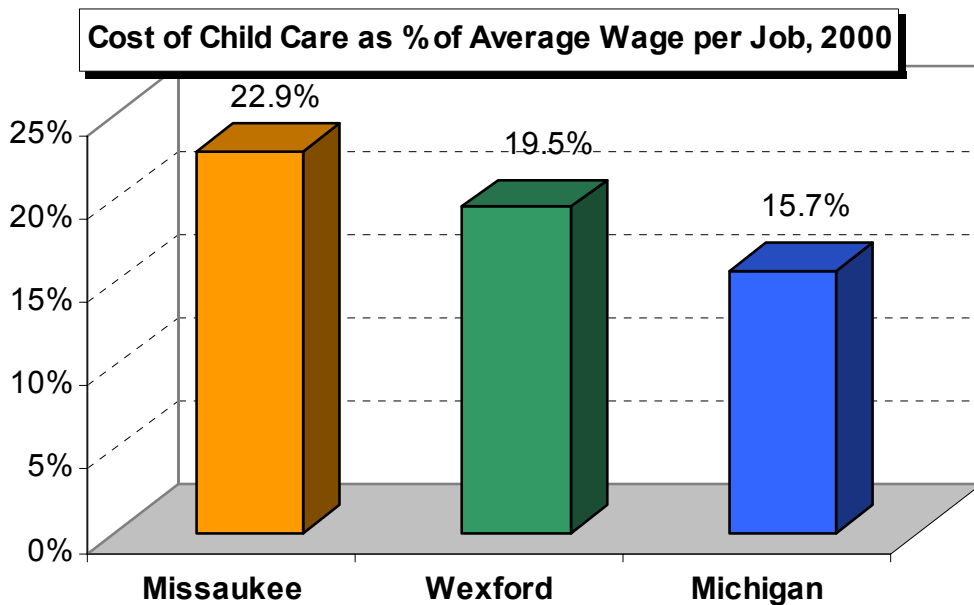


Table 9: Child Care Costs and State Subsidies

Families- Children Under Age 6 -All Parents Working	1,520	716	472,740
% of Families with Children Under Age 6 -All Parents Working	65.9%	63.0%	60.9%
Number of Children in Subsidized Care	153	430	125,305
Percent in Regulated Care	62.7%	60.5%	32.7%
Average Full-Time Cost for Day Care	\$406	\$418	\$476
Cost as % of Average Wage per Job, 2000	22.9%	19.5%	15.7%

Missaukee	Wexford	Michigan
1,520	716	472,740
65.9%	63.0%	60.9%
153	430	125,305
62.7%	60.5%	32.7%
\$406	\$418	\$476
22.9%	19.5%	15.7%

Source: Kids Count In Michigan Data Book, 2002

Grandparents as Care Givers

Grandparents living with their own grandchildren in Missaukee County are much more likely to be responsible for the care of those grandchildren than those living in Wexford County:

- 47.7 % of Missaukee grandparents are responsible for the care of grandchildren living with them
- 37.4% of Wexford grandparents are responsible for the care of grandchildren living with them

By comparison, 42% of Michigan grandparents are responsible for the care of grandchildren living with them.

Chart 6: Grandparents Responsible for Care of Own Grandchildren

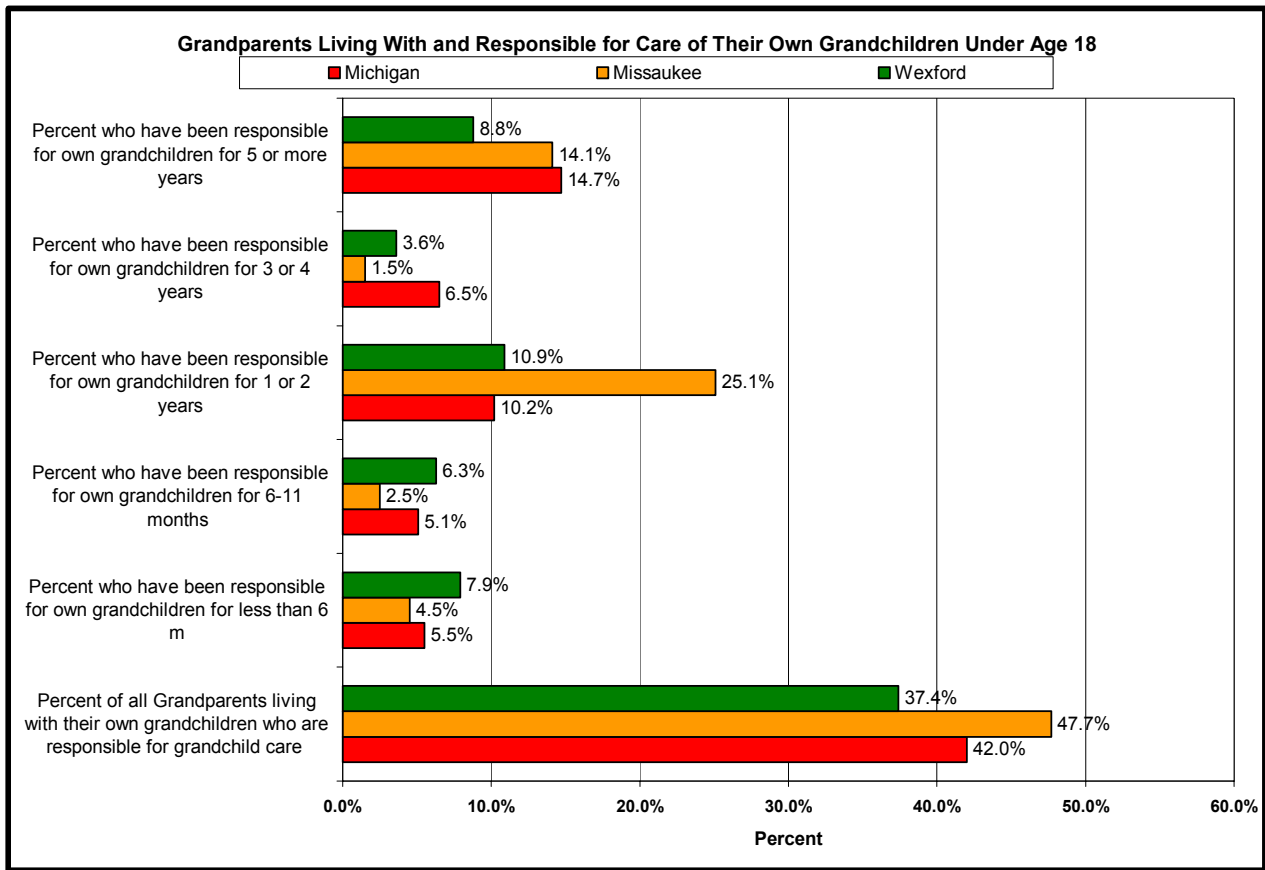


Table 10: Grandparents Living with Own Grandchildren under Age 18 by Responsibility for Grandchildren

Grandparents with responsibility for care of their own grandchildren

- Grandparents living with own grandchildren
 Grandparents who are responsible for own grandchildren:
- For less than 6 months
 - For 6 to 11 months
 - For 1 or 2 years
 - For 3 or 4 years
 - For 5 or more years

MISSAUKEE		WEXFORD	
Number	Percent	Number	Percent
199	100	478	100
95	47.7	179	37.4
9	4.5	38	7.9
5	2.5	30	6.3
50	25.1	52	10.9
3	1.5	17	3.6
28	14.1	42	8.8

Source: 2000 Census SF3

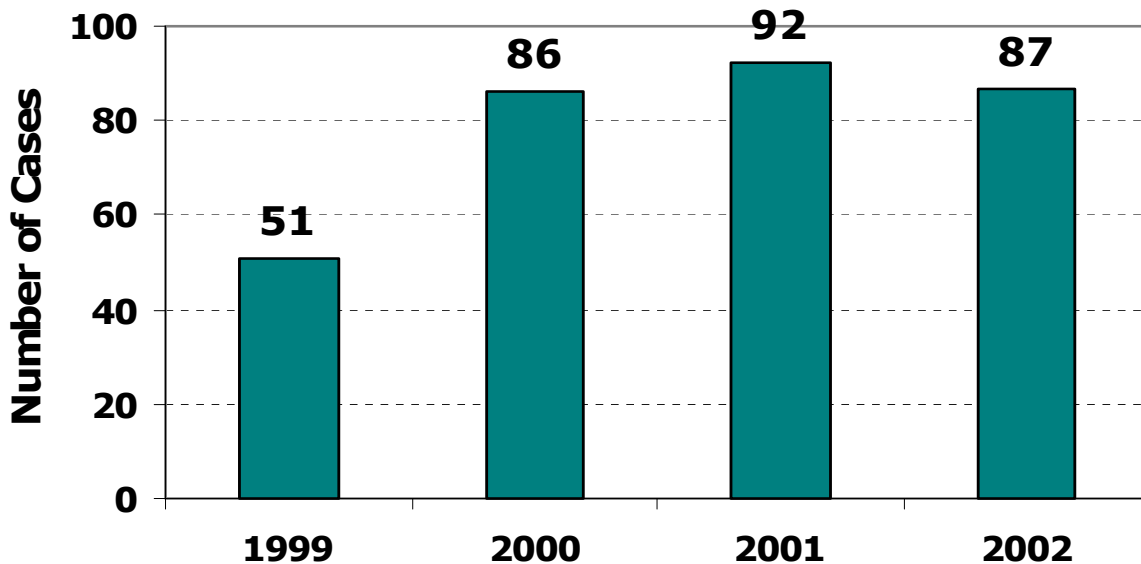
Note: US Census defines *Grandparents as caregivers* (a new question/data category for Census 2000) as follows: *Grandparent(s) who have assumed full care of their grandchildren on a temporary or permanent live-in basis.*

Family Violence

The number of substantiated cases of child abuse increased dramatically in the year 2000, but remained constant between 2000 and 2002.

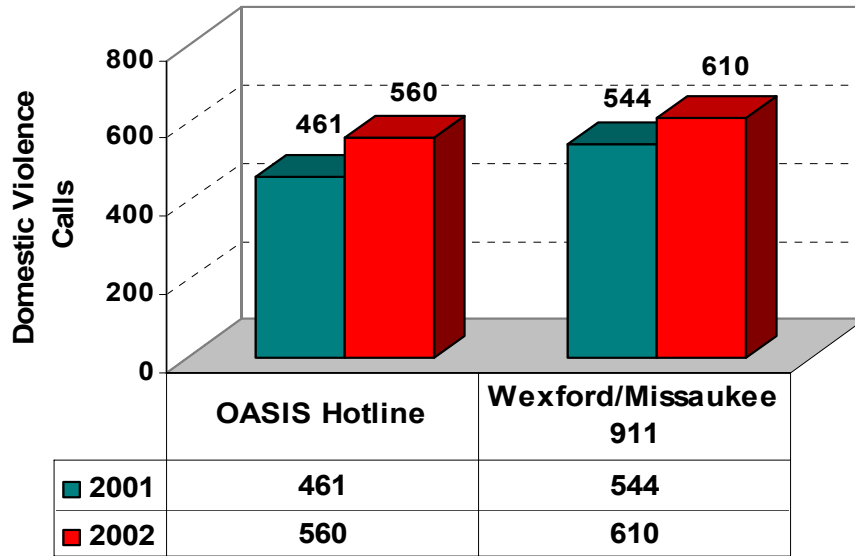
Chart 7: Substantiated Child Abuse Reports

**Wexford and Missaukee Counties:
Substantiated Child Abuse Reports**



Source: CANA Steering Committee

Chart 8: Missaukee/Wexford Domestic Violence Calls, 2000-2001



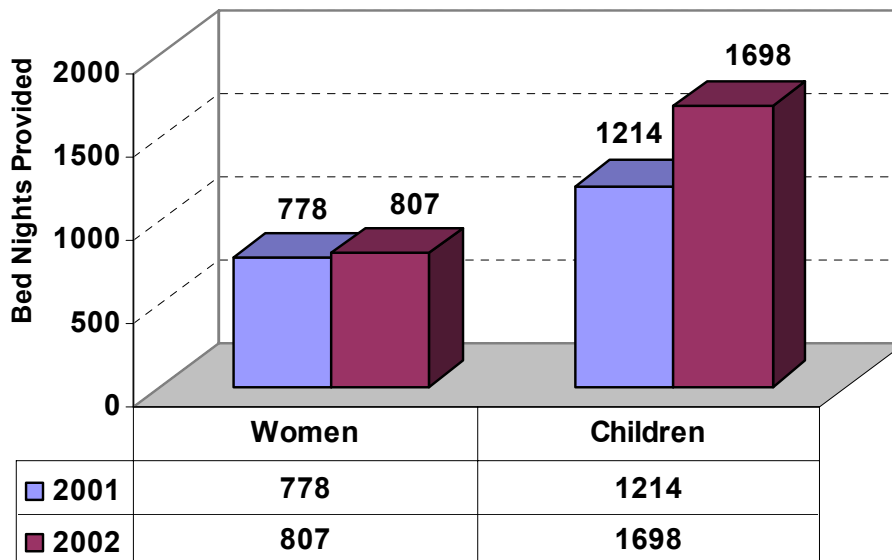
Sources: CANA Steering Committee and OASIS Shelter

From 2000 to 2001, the number of Domestic Violence calls:

- to Missaukee and Wexford County 911 central dispatch increased by 12%
- To the OASIS Shelter hotline increased by 21%

Chart 9: Bed-nights provided by OASIS Shelter, 2001-2002

OASIS Shelter Bed-Nights (Domestic Violence Only)



Source: OASIS Shelter

The number of OASIS shelter beds occupied by children affected by domestic violence increased by 40% from 2001-2002.

Juvenile Delinquency

Juvenile arrests in Michigan declined dramatically from 1991-2000 for both violent crimes (-42.7percentage) and property crimes (-38.4%).

While the change is not statistically significant at 95%, it is noteworthy that in Wexford County:

- Juvenile Violent Crime arrests increased by 77%.
- Juvenile Property Crime arrests increased by 85%.

Table 11: Trends in Juvenile (ages 10-17) Arrests for Index Crimes: Property

Arrests for Index Property Crimes

	Average Annual Rate		Rank 1998-00 (of 81)	% Change	Change Significant @ 95%
	1991-93	1998-00			
Michigan	18	11.1	*	-38.4	YES
Missaukee County	6.2	11.4	47	84.8	NO
Wexford County	31.8	33.9	80	6.5	NO

Source: Kids Count in Michigan Data Book 2002 (til/kc2002/ DArrests/11/12/02)

NA - not enough cases to do the statistical analysis for significance

*too few cases to calculate a reliable rate

Table 12: Trends in Juvenile (ages 10-17) Arrests for Index Crimes: Violent

Arrests for Index Violent Crimes

	Average Annual Rate		Rank 1998-00 (of 63)	% Change	Change Significant @ 95%
	1991-93	1998-00			
Michigan	3.5	2	*	-42.7	YES
Missaukee County	*	*	*	*	NA
Wexford County	2.2	3.8	63	77.2	NO

Source: Kids Count in Michigan Data Book 2002

NA - not enough cases to do the statistical analysis for significance

*too few cases to calculate a reliable rate

Youth Risk Behavior

Western Michigan University Alcohol and Drug Survey

From 2000-2002, the percent of students frequently using marijuana, alcohol and/or cigarettes declined for most ages, but:

- The number of seniors using alcohol and tobacco is above the national average, and
- Almost one in every three high school students regularly drinks enough alcohol to become seriously inebriated, and
- More than one in every five High School students smokes cigarettes on a daily basis.

Table 13: WMU Alcohol and Other Drug Survey, 2000-2002

FREQUENT (DAILY) OR HEAVY USE OF SELECTED DRUGS - Wexford and Missaukee County, 2000-2002								
	Grade 8		Grade 10		Grade 12		USA Grade 12	
	99-00	01-02	99-00	01-02	99-00	01-02	99-00	01-02
Marijuana Daily	2.4%	2.6%	6.5%	3.7%	9.6%	3.6%	5.6%	6.0%
Alcohol Daily	2.6%	1.4%	2.8%	2.7%	4.0%	4.3%	3.9%	2.9%
Five or More Drinks In a Row in the Past Two Weeks	19.0%	14.3%	31.1%	27.1%	36.2%	32.0%	31.5%	30.0%
Cigarettes Daily	12.8%	7.6%	21.6%	20.2%	23.0%	22.5%	22.4%	20.6%
Cigarettes: Half a Pack/ Day	6.0%	2.8%	12.1%	9.8%	15.1%	13.4%	12.6%	11.3%
Smokeless Tobacco Daily	0.8%	0.8%	1.1%	1.7%	3.0%	1.2%	3.2%	3.2%
Number of Cases	744	498	758	410	575	253	15,200	12,800
<i>Source: Michigan Alcohol and Other Drugs School Survey, Conducted Through The Kercher Center for Social Research, Western Michigan University, 1999-2000: Aggregate Report on the Wexford-Missaukee Intermediate School District.</i>								
"National Grade 12" is based on the National High School Senior Survey (Monitoring the Future) conducted by the Institute of Social Research, University of Michigan, Spring 1998								
"Any Illicit Drug" includes any drug on this table except inhalants, steroids, alcohol, cigarettes, or smokeless tobacco								
"Any Illicit Drug Use Other Than Marijuana" includes any drug on this table except inhalants, steroids, alcohol, cigarettes, smokeless tobacco, or marijuana								
"Tranquilizers, Sedatives, Stimulants and Narcotics Other than Heroin" refers only to use not under a doctor's order								

Table 14: WMU Alcohol and Other Drug Survey, 2000-2002- Aggregate Report on the Wexford-Missaukee ISD

	Gr. 8		Gr. 10		Gr. 12		National Gr. 12	
	99-00	01-02	99-00	01-02	99-00	01-02	99-00	01-02
Number of Cases	744	498	758	410	575	253	15,200	12,800
Any Illicit Drug Use	18.5%	12.8%	28.1%	24.2%	34.5%	26.1%	25.6%	24.9%
Any Illicit Drug Use Other Than Marijuana	11.2%	8.7%	14.6%	14.6%	18.4%	14.7%	10.7%	10.4%
Marijuana	14.0%	10.0%	24.3%	19.5%	31.3%	20.9%	22.8%	21.6%
Crack Cocaine	1.6%	1.2%	1.8%	2.0%	1.8%	1.2%	1.0%	1.0%
Other Cocaine	1.4%	0.6%	2.0%	1.8%	3.0%	2.4%	2.0%	1.7%
Hallucinogens (LSD, PCP, etc.)	2.7%	1.6%	3.4%	1.5%	6.3%	1.6%	3.8%	2.6%
Inhalants	7.4%	5.3%	6.9%	5.0%	3.4%	2.0%	2.3%	2.2%
Heroin	1.1%	1.2%	1.6%	0.5%	1.4%	0.4%	0.5%	0.7%
Tranquilizers	2.3%	1.2%	5.3%	1.7%	6.8%	4.0%	2.4%	2.6%
Sedatives (Barbiturates)	3.8%	2.5%	5.0%	5.5%	5.4%	6.0%	2.8%	3.0%
Stimulants (Amphetamines)	6.0%	3.7%	9.7%	8.8%	10.6%	9.6%	4.6%	5.0%
Narcotics Other Than Heroin	2.3%	2.5%	5.3%	3.5%	6.8%	4.0%	2.4%	2.9%
Alcohol	27.9%	24.4%	44.8%	38.5%	55.3%	49.4%	52.0%	50.0%
Cigarettes	21.6%	21.1%	30.7%	43.0%	34.9%	41.8%	35.1%	31.4%
Smokeless Tobacco	4.5%	8.2%	6.8%	18.6%	8.9%	9.4%	8.8%	7.6%
Steroids	2.0%	0.8%	2.4%	1.8%	1.1%	1.6%	1.1%	0.8%
Methamphetamine	NA	1.20%	1.00%	1.00%	NA	2.00%	NA	1.9%
Ecstasy	NA	0.60%	2.50%	2.50%	NA	2.40%	NA	3.6%
Rohypnol	NA	1.40%	1.20%	1.20%	NA	0.40%	NA	0.4%
<i>Source: Michigan Alcohol and Other Drugs School Survey, Conducted Through The Kercher Center for Social Research, WMU, 1999-2000:.</i>								

Notes: See Table 12, above